

BALDOR® • RELIANCE 

Product Information Packet

EM3714T-9

10HP,1770RPM,3PH,60HZ,215T,3760M,TEFC,F1

| Part Detail | | | | | | | |
|-------------|--------|-------------|------------|-------------|--------|---------------|------------|
| Revision: | D | Status: | PRD/A | Change #: | | Proprietary: | No |
| Type: | AC | Elec. Spec: | 37WGT851 | CD Diagram: | CD0180 | Mfg Plant: | |
| Mech. Spec: | 37N852 | Layout: | 37LYN852 | Poles: | 04 | Created Date: | 04-09-2016 |
| Base: | RG | Eff. Date: | 07-24-2020 | Leads: | 9#14 | | |

| Specs | | | |
|---------------------------------|-------------------------|--------------------------------|----------------------------|
| Catalog Number: | EM3714T-9 | Insulation Class: | F |
| Enclosure: | TEFC | Inverter Code: | Inverter Ready |
| Frame: | 215T | KVA Code: | J |
| Frame Material: | Steel | Lifting Lugs: | Standard Lifting Lugs |
| Output @ Frequency: | 10.000 HP @ 60 HZ | Locked Bearing Indicator: | No Locked Bearing |
| Synchronous Speed @ Frequency: | 1800 RPM @ 60 HZ | Motor Lead Quantity/Wire Size: | 9 @ 14 AWG |
| Voltage @ Frequency: | 460.0 V @ 60 HZ | Motor Lead Exit: | Ko Box |
| | 230.0 V @ 60 HZ | Motor Lead Termination: | Flying Leads |
| XP Class and Group: | None | Motor Type: | 3760M |
| XP Division: | Not Applicable | Mounting Arrangement: | F1 |
| Agency Approvals: | CSA | Power Factor: | 78 |
| | CSA EEV | Product Family: | WP Below Decks Marine Duty |
| | UR | Pulley End Bearing Type: | Ball |
| Auxillary Box: | No Auxillary Box | Pulley Face Code: | Standard |
| Auxillary Box Lead Termination: | None | Pulley Shaft Indicator: | Standard |
| Base Indicator: | Rigid | Rodent Screen: | None |
| Bearing Grease Type: | Polyrex EM (-20F +300F) | RoHS Status: | ROHS COMPLIANT |
| Blower: | None | Shaft Extension Location: | Pulley End |

| | | | |
|---------------------------------------|---------------------------|------------------------------------|---------------------|
| Current @ Voltage: | 13.100 A @ 460.0 V | Shaft Ground Indicator: | No Shaft Grounding |
| | 26.200 A @ 230.0 V | Shaft Rotation: | Reversible |
| Design Code: | A | Shaft Slinger Indicator: | Shaft Slinger |
| Drip Cover: | No Drip Cover | Speed Code: | Single Speed |
| Duty Rating: | CONT | Motor Standards: | NEMA |
| Electrically Isolated Bearing: | Not Electrically Isolated | Starting Method: | Direct on line |
| Feedback Device: | NO FEEDBACK | Thermal Device - Bearing: | None |
| Front Face Code: | Standard | Thermal Device - Winding: | None |
| Front Shaft Indicator: | None | Vibration Sensor Indicator: | No Vibration Sensor |
| Heater Indicator: | No Heater | Winding Thermal 1: | None |
| | | Winding Thermal 2: | None |

| Nameplate NP1267L | | | | | | | | | | |
|----------------------------|--------------|--|------|----|----------------|------|--|----|----|---|
| CAT.NO. | EM3714T-9 | | | | | | | | | |
| SPEC. | 37N852T851G1 | | | | | | | | | |
| HP | 10 | | | | | | | | | |
| VOLTS | 230/460 | | | | | | | | | |
| AMP | 26.2/13.1 | | | | | | | | | |
| RPM | 1770 | | | | | | | | | |
| FRAME | 215T | | | | HZ | 60 | | | PH | 3 |
| SER.F. | 1.15 | | CODE | J | DES | A | | CL | F | |
| NEMA-NOM-EFF | 91.7 | | PF | 78 | | | | | | |
| RATING | 40C AMB-CONT | | | | | | | | | |
| CC | 010A | | | | USABLE AT 208V | | | | | |
| DE | 6307 | | | | ODE | 6206 | | | | |
| ENCL | TEFC | | SN | | | | | | | |
| MEETS DESIGN C TORQUE IP55 | | | | | | | | | | |

| Parts List | | |
|-------------|--|----------|
| Part Number | Description | Quantity |
| SA318379 | SA 37N852T851G1 | 1.000 EA |
| RA306015 | RA 37N852T851G1 | 1.000 EA |
| 37FN3002C01 | EXFN, PLASTIC, 6.00 OD, 1.155 ID | 1.000 EA |
| HW3200A01 | 3/8-16X3/4 I-BLT WELDED F/S | 1.000 EA |
| 37CB3005A04 | 37 CB .75 NPT @ 6:00 | 1.000 EA |
| 37GS1002 | 1/8" NEOPRENE GASKET, CONDUIT BOX | 1.000 EA |
| 51XW2520A12 | .25-20 X .75, TAPTITE II, HEX WSHR SLTD | 2.000 EA |
| 11XW1032G06 | 10-32 X .38, TAPTITE II, HEX WSHR SLTD U | 1.000 EA |
| 37EP3101C12 | FREP TEFC L&M W/GRSR,REL,SLINGER, DRAIN | 1.000 EA |
| HW4500A17 | 317400 ALEMITE GREASE RELIEF | 1.000 EA |
| HW4500A01 | 1641B(ALEMITE)400 UNIV, GREASE FITT | 1.000 EA |
| HA4054 | SHORT T-DRAIN FITTING, .125" N.P.T. | 1.000 EA |
| HW5100A06 | W2420-025 WVY WSHR (WB) | 1.000 EA |
| 37EP3100B12 | PUEP 307 BRG W/GREASER,RELIEF,.125 | 1.000 EA |
| HW4500A17 | 317400 ALEMITE GREASE RELIEF | 1.000 EA |
| HW4500A01 | 1641B(ALEMITE)400 UNIV, GREASE FITT | 1.000 EA |
| HA4054 | SHORT T-DRAIN FITTING, .125" N.P.T. | 1.000 EA |
| HA3104A29 | THRUBOLT, .31-18 X 15.19 | 4.000 EA |
| XY3118A12 | 5/16-18 HEX NUT DIRECTIONAL SERRATION | 4.000 EA |
| 51XB1214A16 | 12-14X1.00 HXWSSLD SERTYB | 1.000 EA |
| 07FH4007SP | PRIMED | 1.000 EA |
| 51XW1032A06 | 10-32 X .38, TAPTITE II, HEX WSHR SLTD S | 3.000 EA |
| 37CB4516 | LIPPED LID FOR 37 FRAME NEC KOBX | 1.000 EA |
| 37GS1008A01 | 37 GS FOR CB LID - BLACK NEOPRENE | 1.000 EA |

| Parts List (continued) | | |
|-------------------------------|--|-----------------|
| Part Number | Description | Quantity |
| 51XW0832A07 | 8-32 X .44, TAPTITE II, HEX WSHR SLTD SE | 4.000 EA |
| HW4600B36SP | V-RING SLINGER 1.188 X 1.690 X .24 VITON | 1.000 EA |
| HW4600B31SP | V-RING SLINGER 1.438 X 1.758 X .24 VITON | 1.000 EA |
| HW2501F21 | KEY, 5/16 SQ X 2.375 | 1.000 EA |
| HA7000A02 | KEY RETAINER RING, 1 1/8 DIA, 1 3/8 DIA | 1.000 EA |
| MJ5001A27 | 32220KN GRAY SEALER *MIN BUY 4 QTS=1GAL | 0.001 QT |
| 85XU0407S04 | 4X1/4 U DRIVE PIN STAINLESS | 2.000 EA |
| LB1115N | LABEL,LIFTING DEVICE (ON ROLLS) | 1.000 EA |
| MJ1000A02 | GREASE, MOBIL POLYREX EM - 124047 | 0.050 LB |
| MG1000G27 | MED CHARCOAL METALLIC GREY 400-0096 | 0.028 GA |
| LB1119N | WARNING LABEL | 1.000 EA |
| LC0181 | CONNECTION LABEL | 1.000 EA |
| NP1267L | SS SUPER-E LASER BLANK | 1.000 EA |
| 37PA1074 | PALLET PACK GRP, PRINT BOX PK1026A06 | 1.000 EA |
| MN416A01 | TAG-INSTAL-MAINT no wire (1200/bx) 3/19 | 1.000 EA |

AC Induction Motor Performance Data

Record # 58159 - Typical performance - not guaranteed values

| | | |
|-------------------------------|--------------------|------------------------|
| Winding: 37WGT851-R001 | Type: 3760M | Enclosure: TEFC |
|-------------------------------|--------------------|------------------------|

| Nameplate Data | | | | 460 V, 60 Hz: High Voltage Connection | |
|-----------------------|--------------|--------------|----|--|----------------|
| Rated Output (HP) | 10 | | | Full Load Torque | 29.8 LB-FT |
| Volts | 230/460 | | | Start Configuration | direct on line |
| Full Load Amps | 25.6/12.8 | | | Breakdown Torque | 94.5 LB-FT |
| R.P.M. | 1770 | | | Pull-up Torque | 54 LB-FT |
| Hz | 60 | Phase | 3 | Locked-rotor Torque | 91.1 LB-FT |
| NEMA Design Code | A | KVA Code | J | Starting Current | 90.1 A |
| Service Factor (S.F.) | 1.15 | | | No-load Current | 6.23 A |
| NEMA Nom. Eff. | 92.4 | Power Factor | 79 | Line-line Res. @ 25°C | 0.79976 Ω |
| Rating - Duty | 40C AMB-CONT | | | Temp. Rise @ Rated Load | 64°C |
| S.F. Amps | | | | Temp. Rise @ S.F. Load | 78°C |
| | | | | Locked-rotor Power Factor | 37.8 |

Load Characteristics 460 V, 60 Hz, 10 HP

| % of Rated Load | 25 | 50 | 75 | 100 | 125 | 150 | S.F. |
|-----------------|--------|--------|--------|--------|--------|--------|------|
| Power Factor | 38 | 60 | 72 | 78 | 81 | 82 | 80 |
| Efficiency | 87.5 | 91.8 | 92.4 | 92.1 | 91.3 | 90.2 | 91.6 |
| Speed | 1792.1 | 1784.7 | 1776.9 | 1767.8 | 1758.4 | 1747.7 | 1762 |
| Line amperes | 6.87 | 8.43 | 10.5 | 13.1 | 15.9 | 19 | 14.8 |

Performance Graph at 460V, 60Hz, 10.0HP Typical performance - Not guaranteed values

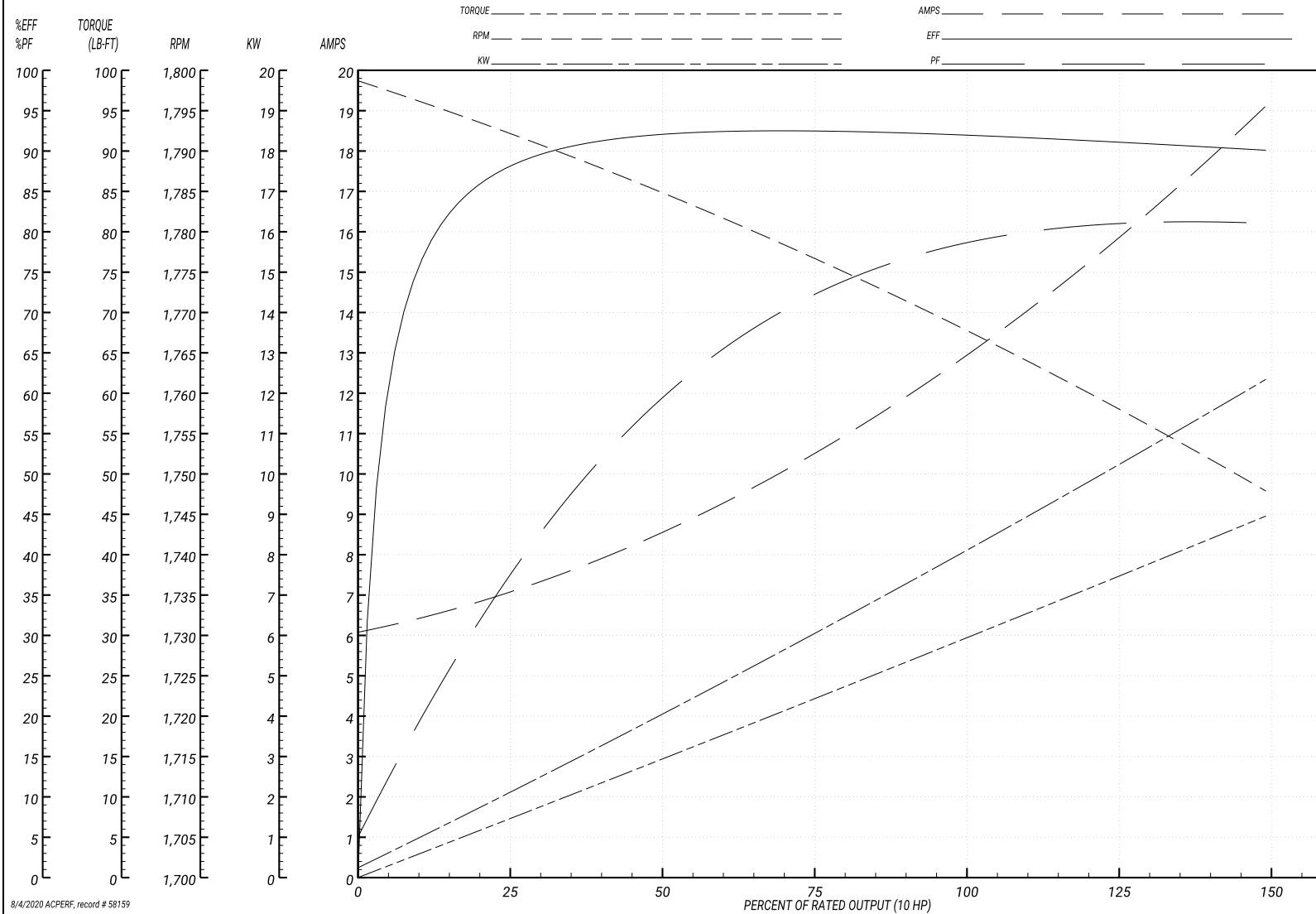
ABB Motors and Mechanical Inc.

WINDING # 37WGT851

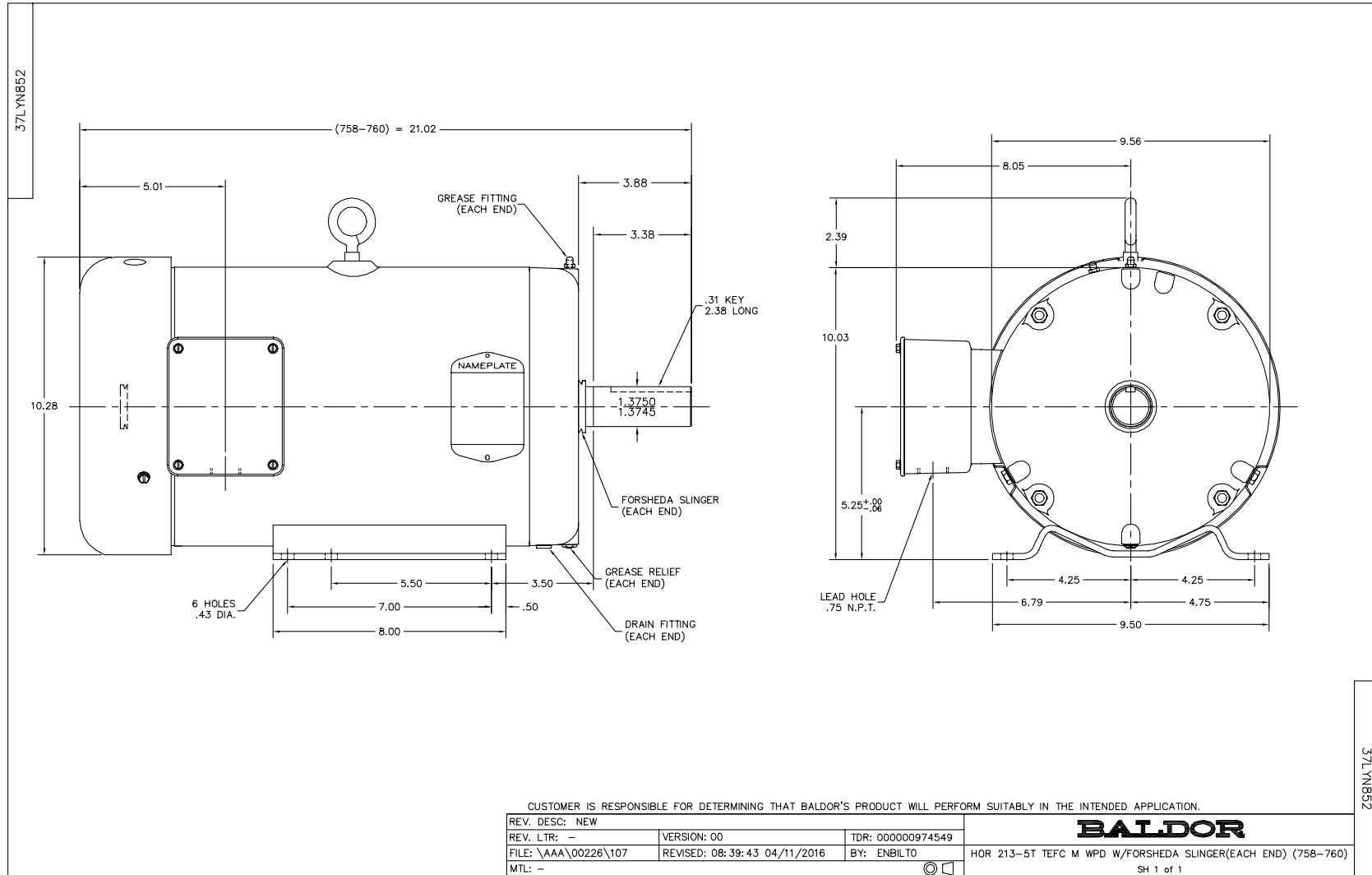
Typical performance - not guaranteed values.

10 HP 3 PH 60 HZ 1770 RPM 460 V 3760M

TORQUES(LB-FT): PO=94.5 PU=54 LR=91.1 LRA=90.1



8/4/2020 ACPERF, record # 58159



CD0180



LOW VOLTAGE
(2D)



HIGH VOLTAGE
(1D)



NOTES:

1. INTERCHANGE ANY TWO LINE LEADS TO REVERSE ROTATION.
2. OPTIONAL THERMOSTATS ARE PROVIDED WHEN SPECIFIED.
3. ACTUAL NUMBER OF INTERNAL PARALLEL CIRCUITS MAY BE A MULTIPLE OF THOSE SHOWN ABOVE.
4. LEAD COLORS ARE OPTIONAL. LEADS MUST ALWAYS BE NUMBERED AS SHOWN.

CD0180

| | | |
|-----------------------------------|------------------------------|-------------------|
| REV. DESC: ADD CLASS CONN00000007 | | |
| REV. LTR: D | VERSION: 01 | TDR: 000001099922 |
| FILE: \AAA\00005\148 | REVISED: 10:25:29 02/19/2019 | BY: ENBRIRO |
| MTL: - | © □ | |

BALDOR - RELIANCE[®]

3PH, DV, 9 LEADS, DELTA CONNECTION

SH 1 of 1